



## Overton Square Public Meeting/Charrette July 24, 2009

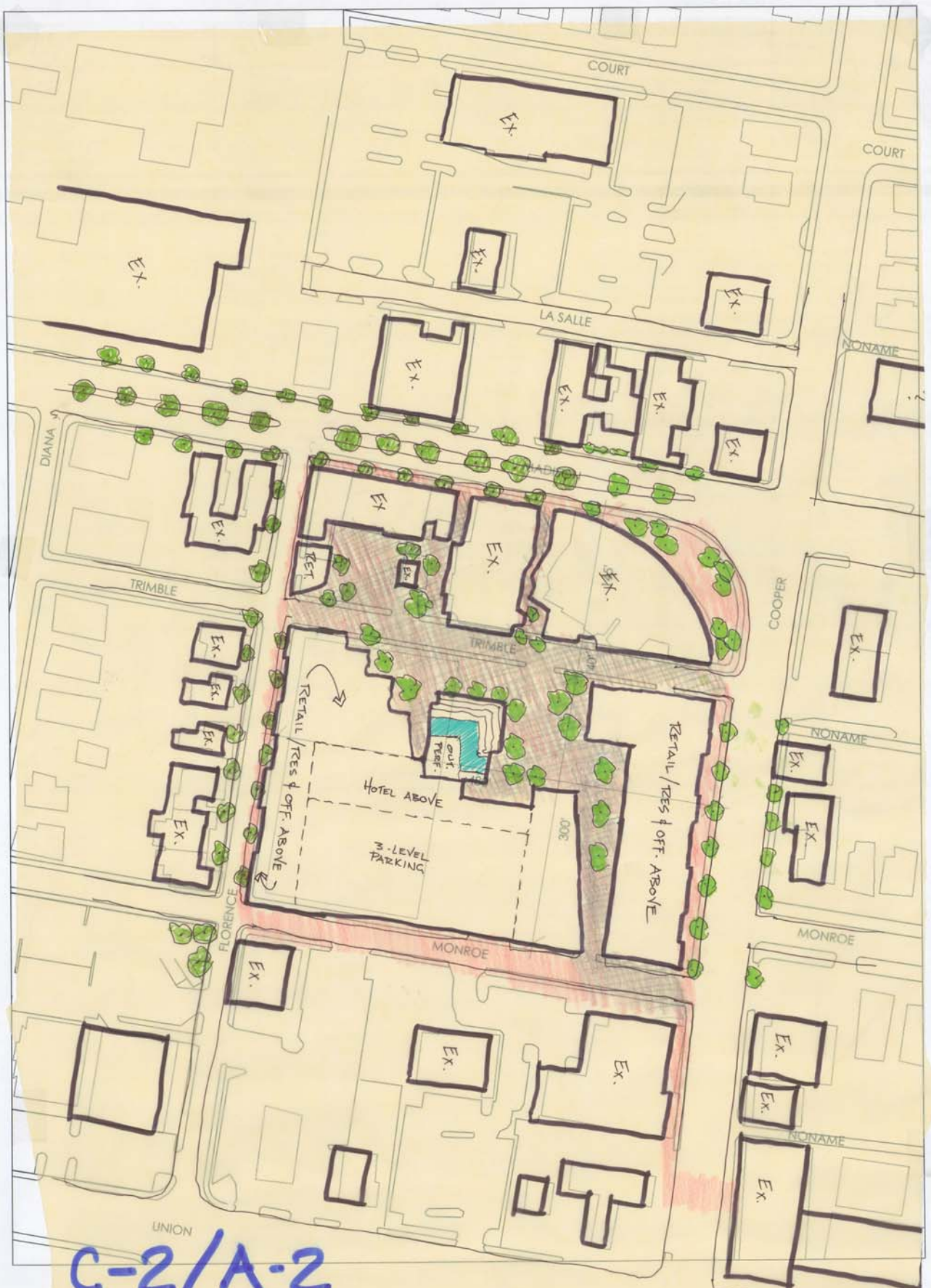
### Plan A2/C2

This plan has been renamed A2/C2 as it keeps all existing buildings as a prerequisite for Group A, but it does have a lot of elements that are part of Plan C1A/B.

1. **New Construction:** The Plan proposes a 7-storied hotel building with the bottom floor and two level of underground parking. It also has a retail façade on the bottom floor on Florence with possibilities of Office/Residential on two floors above that. A separate new mixed use building is proposed on Cooper with retail on the bottom floor and office/residential proposed on the two floors above. A new retail building is also proposed at the corner of Florence and Trimble.
2. **Outdoor Performance:** An outdoor amphitheater and water feature is proposed connected to the hotel building at ground level enclosed to the north by the Overton Square buildings on Madison, and to the east by the proposed mixed use building on Cooper – all connected by a large pedestrian plaza area. Trimble will be open for limited service area, but will be paved all brick as part of the above mentioned pedestrian plaza area.

#### **Square Footage on Site** (Area bounded by N-Madison, E-Cooper, S-Monroe, W-Florence)

Existing Retail: 54,814 SFT  
Proposed Retail: 52,675 SFT  
Proposed Hotel: 304,950 SFT  
Proposed Office: 50,675 SFT  
Proposed Residential (Apts): 50,675 SFT  
Proposed Parking (3-level garage): 88,200 SFT



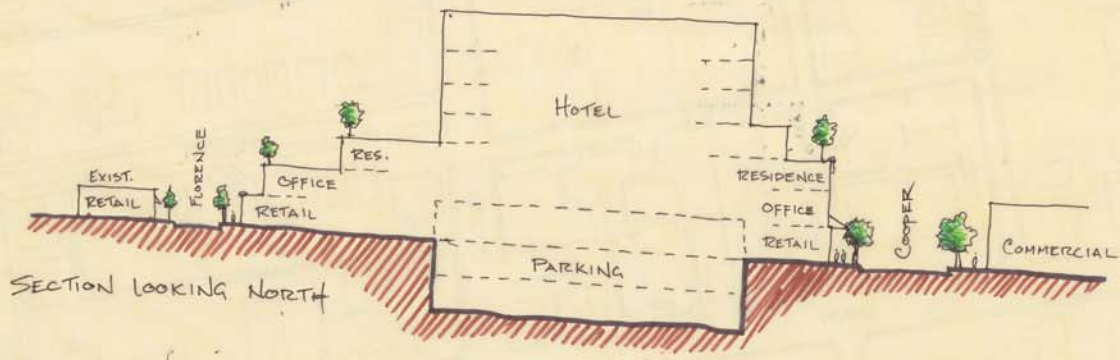
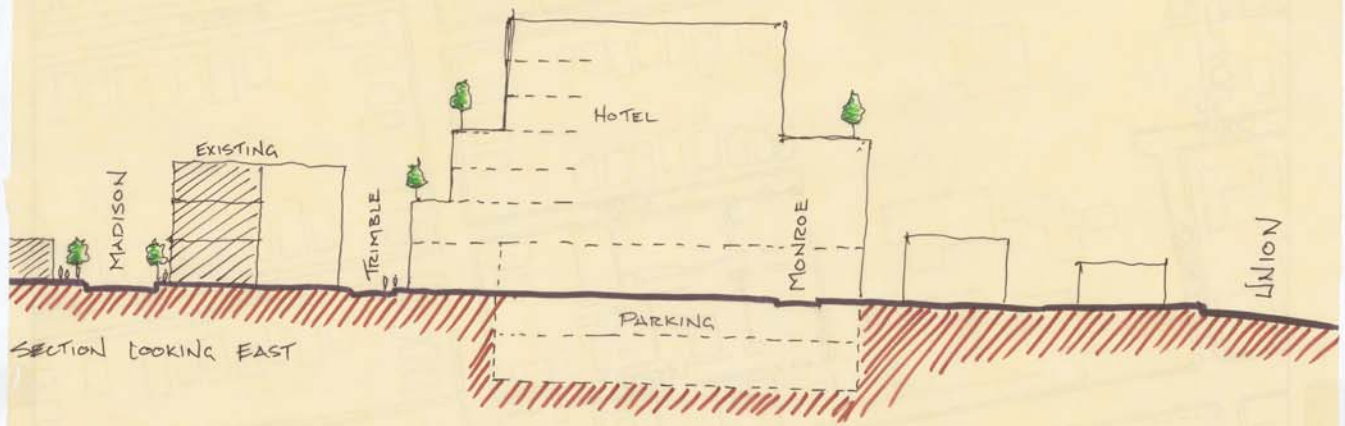
C-2/A-2

# Overton Square: Site Map



Memphis Regional Design Center: Vision for Overton Square  
 MRDC02 - OvertonSquare\_Site\_map\_large2\_090723.pdf

**Memphis  
 Regional  
 Design  
 Center**



**C1#2  
SECTION**

